

The latest on COVID-19 and how to get ready for school and our new normal

Topics:

- Latest on COVID-19
- Updated safety precautions with fall and school back in session
- Information is POWER – understanding the science behind the vaccine
- Supporting our collective mental health





Ed Gilkey, MD, MS,
MBA, CPE, Senior
Physician Executive,
Northern Light
Beacon Health



Jim Jarvis, MD, FAAFP,
Senior Physician
Executive , Incident
Command, Northern
Light Health, Director,
Clinical Education,
Northern Light EMMC



Amy Belisle, MD, MBA,
MPH, Chief Pediatrician
and Chief Child Health
Officer, Maine
Department of Health
and Human Services



Elisabeth Marnik, Ph.D,
Assistant Professor College
of Science and Humanities,
Husson University



Angela Fileccia, LCSW,
Director Healthy Life
Resource Program,
Northern Light Acadia

Legal Disclosure:

The Coronavirus pandemic is an ongoing, continuously evolving situation.

Northern Light Health encourages everyone to follow federal and state governmental guidance and mandates.

Northern Light Health does not know the particulars of your situation, so the information presented today is general in nature and is based upon Northern Light Health's own experience, which may or may not apply in your specific situation, and which may be revised as we learn more about the Coronavirus.

Accordingly, following any guidance Northern Light Health presents today in no way guarantees that you, your employees and/or your customers and clients will not contract or spread the Coronavirus.

Ask us questions – give us feedback – this hour is for you

- Please use the [Q and A](#) function to ask your questions at anytime.

Good Health Is Good Business Survey (Updated July 15)

Page 1 of 1

1. I am able to apply the tools and guidance provided today to support my workplace and/or employees.*

☐ Strongly Agree
☐ Agree
☐ Neutral
☐ Disagree
☐ Strongly Disagree

2. The information provided today was easy to understand and relevant.*

☐ Strongly Agree
☐ Agree
☐ Neutral
☐ Disagree
☐ Strongly Disagree

3. How likely are you to recommend the Business to Business Zoom Conference series to a fellow colleague and / or Maine employer?*

☐ Very Likely
☐ Likely
☐ Neutral
☐ Unlikely
☐ Very Unlikely

4. How likely are you to attend one of our Business to Business Zoom Conferences in the future?*

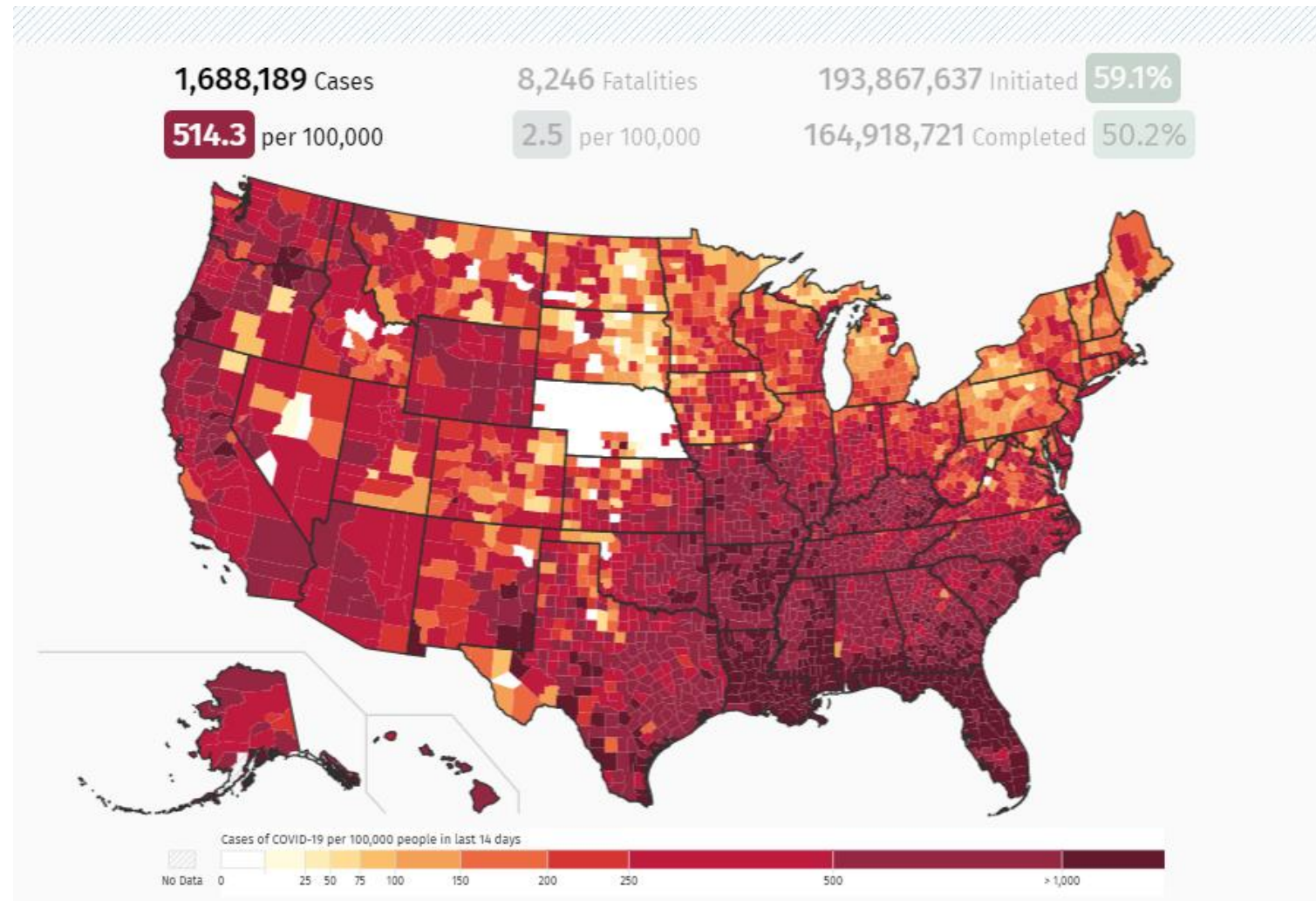
☐ Very Likely
☐ Likely
☐ Neutral
☐ Unlikely
☐ Very Unlikely

5. What topic(s) would you like us to focus on in the future?

Done

Latest on COVID-19

Delta Variant – What's the impact



Delta variant and vaccines



Northern Light Health.



COVID-19 Test Orders & Results

(Inclusive of NLH Employee Testing)

Data as of: 08/15/2021 | Data Source: Cerner

Confirmed Tests

8,792

Resulted Tests

253,454

2WK Positive Rate

5.65%

1WK Positive Rate

6.55%



Maine Residents - 243,384 | Pos Rate: 3.48% #####

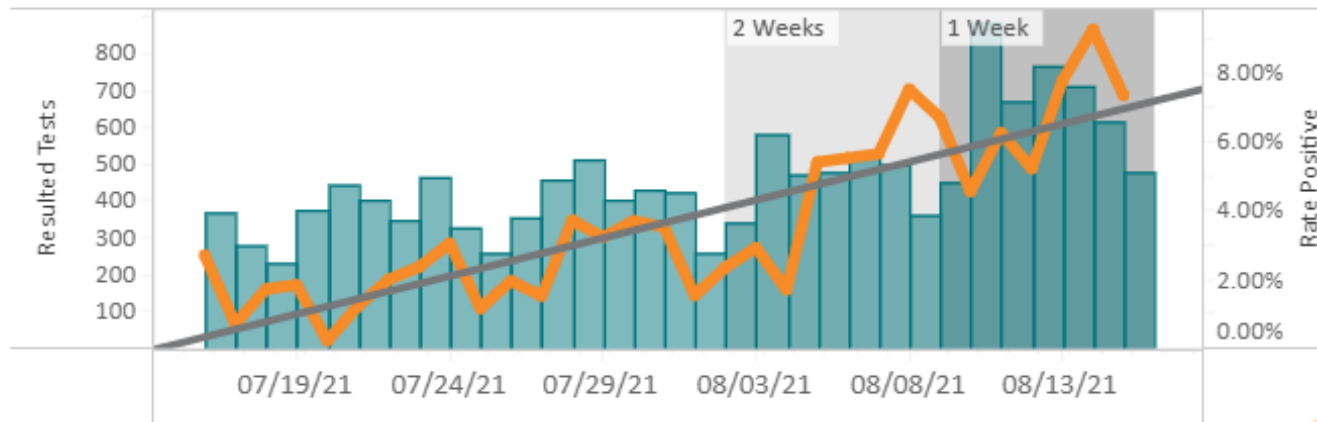
Daily Positivity Trend - Resulted Tests

Rolling 30 Days

Positivity Rate

Total Tests

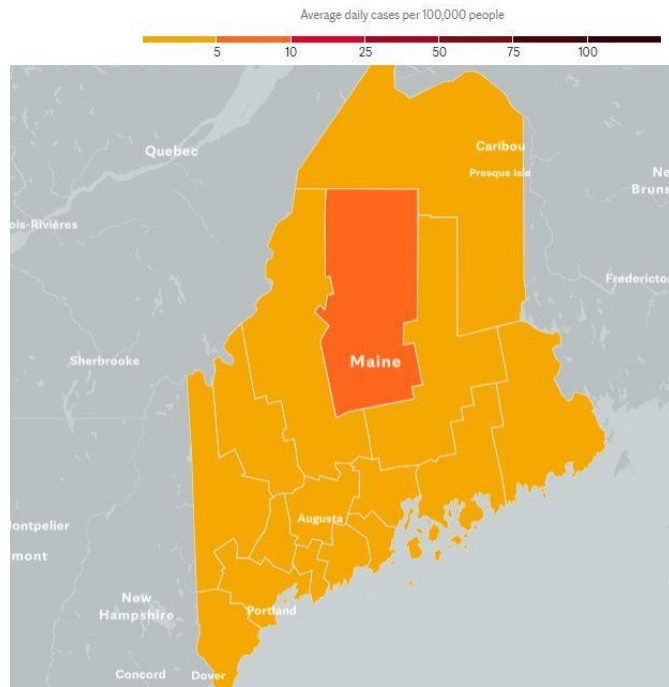
Trend Line



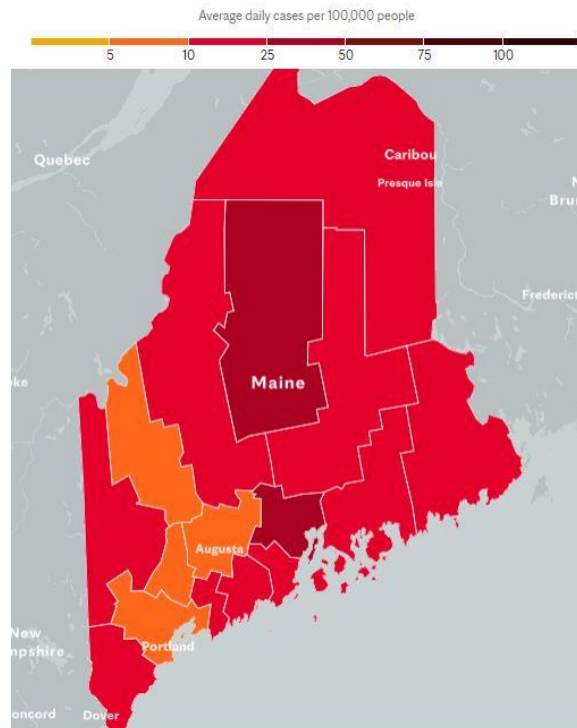
Delta Variant – past, present, future...

U.S. Coronavirus Map: Tracking the Trends - Mayo Clinic

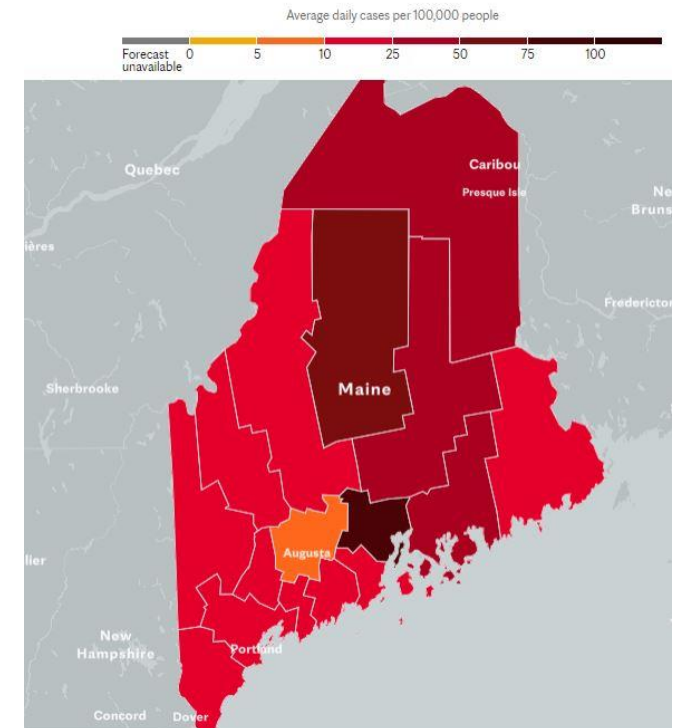
June 15, 2021



Today



August 29, 2021



Delta Variant and our kids

- 18 and under in US
 - 1,900 children under 18 Hospitalized in US
- 20 and under Maine
 - 20% Increase in positive cases in Maine to those under 20

**Due to Regional
COVID-19 Rates**



Masking is Required Inside
Regardless of Vaccination Status
Thank You!



Update on Booster shot!

Currently all talk around booster or additional doses are for **Pfizer and Moderna** (MRNA) vaccines **only**

- Yesterday it was announced that government it is working on a plan to offer booster doses in mid to late September
 - These should be given no earlier than 8 months after last dose of primary series.
 - These are only for Pfizer and Moderna
 - We may hear more about Johnson & Johnson later
 - Northern Light and the State are discussing plans for Maine

Let's talk boosters

For people with severe immunocompromising conditions, a third dose of either Pfizer or Moderna is available now.

The conditions are as follows:

- People in active treatment for solid tumor and blood cancers
- Recipients of solid-organ transplants taking immunosuppressive therapy
- Recipients of certain cell including stem cell transplants
 - if it is within 2 years of transplantation or are currently taking immunosuppression therapy
- People in active treatment with
 - high-dose corticosteroids (i.e., ≥ 20 mg prednisone or equivalent per day)
 - alkylating agents
 - antimetabolites, or
 - other biologic agents that are immunosuppressive
- People with advanced or untreated HIV infection
- Individuals should consult with their Physician to ensure they meet the current guidance

Maine DHHS COVID-19 Updates



Amy Belisle MD, MBA, MPH, ME DHHS

COVID-19 and Youth Age <25 in Maine Data

COVID-19 and Youth in Maine: Data as of July 26, 2021

Total Number of Confirmed and Probable COVID-19 Cases Among Youth and Young Adults Age < 25:

20,672

Total Number of Cases by Age Group	
0-4	1,969
5-9	2,570
10-14	3,261
15-19	5,653
20-24	7,219
25+	49,689

Percent of Total Cases Age < 25:

29.4%

Percent of Total Cases Age ≤ 18:

17.0%

Total Number of Hospitalizations Under Age 25:

49

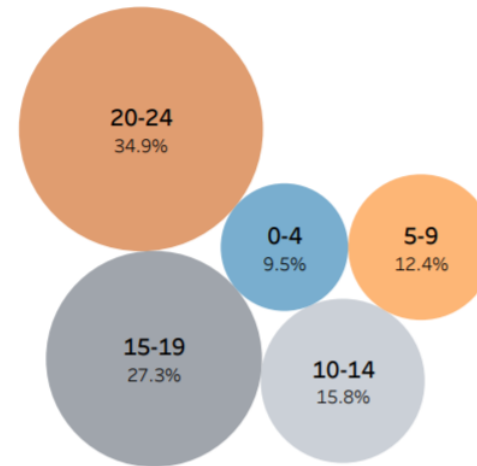
Age Breakdown of Hospitalized Youth Cases:	
0-4	24.5%
5-9	6.1%
10-14	4.1%
15-19	30.6%
20-24	34.7%

Source: Maine Center for Disease Control and Prevention NEDSS Base System (NBS)*
*These are preliminary data that are subject to change.

Total Number of Confirmed and Probable COVID-19 Cases Among Mainers of All Age Groups:

70,361

Percent of Total Confirmed and Probable Youth Cases by Age Group



Caption
Age group and % of Total Count of COVID-19 cases. Color shows details about age group. Size shows % of Total Count of COVID-19 cases. The marks are labeled by age group and % of Total Count of COVID-19 cases. The view is filtered on age group, which excludes 25+.

<https://www.maine.gov/dhhs/mecdc/infectious-disease/epi/airborne/documents/COVID-19-Youth-8-2.pdf>

Maine CDC Response to U.S. CDC Guidelines for K-12 Schools

- U.S. Centers for Disease Control and Prevention (CDC)'s [has issued new recommendations](#) on **universal masking** in schools to help students and staff safely gather in person and in classrooms amid the nationwide increase of the Delta variant.
- All people on public or private **school-provided transport**, including buses and vans, are required to wear a mask, per U.S. CDC Order.
- Encourage vaccination of all eligible staff and students: **Vaccines** help reduce the spread of COVID-19 and the number of people who will need to quarantine, should there be a positive case in school.
- U.S. CDC's guidance strongly recommends screening testing (e.g., **pool testing**), masks, and physical distancing when possible.

School Guidance

- DOE School Framework:
 - [COVID-19 ToolKit | Department of Education \(maine.gov\)](#)
- CDC School:
 - [Guidance for COVID-19 Prevention in K-12 Schools | CDC](#)
- School SOP
 - [Standard Operating Procedures \(SOP\) for Responding to a Positive Case in Schools | Department of Education \(maine.gov\)](#) (Revised August 12, 2021)

School Screening Form

Students and Staff
should **stay home** if
they are **sick**

Pre-Screening Tool for School Attendance

Within the past 24 hours have you
had a fever or taken fever reducing
medicine?

YES =



Do you feel sick, had
vomiting/diarrhea, fever*, sore
throat, or felt unwell?)

YES =



Have you been told to stay home
and quarantine due to COVID-19
exposure?

YES =



Stay home with any YES response to the questions above.

Attend school when all answers are NO and your child is feeling well with no other symptoms of illness. Call or see your school nurse or other designated person at school if you have questions.

IF YOUR CHILD HAS ANY ILLNESS THEY SHOULD STAY AT HOME UNTIL NO FEVER FOR 24 HOURS WITHOUT TAKING FEVER REDUCING MEDICATION AND SYMPTOMS ARE IMPROVING OR GONE.

*A fever is 100.4F/38C or greater.

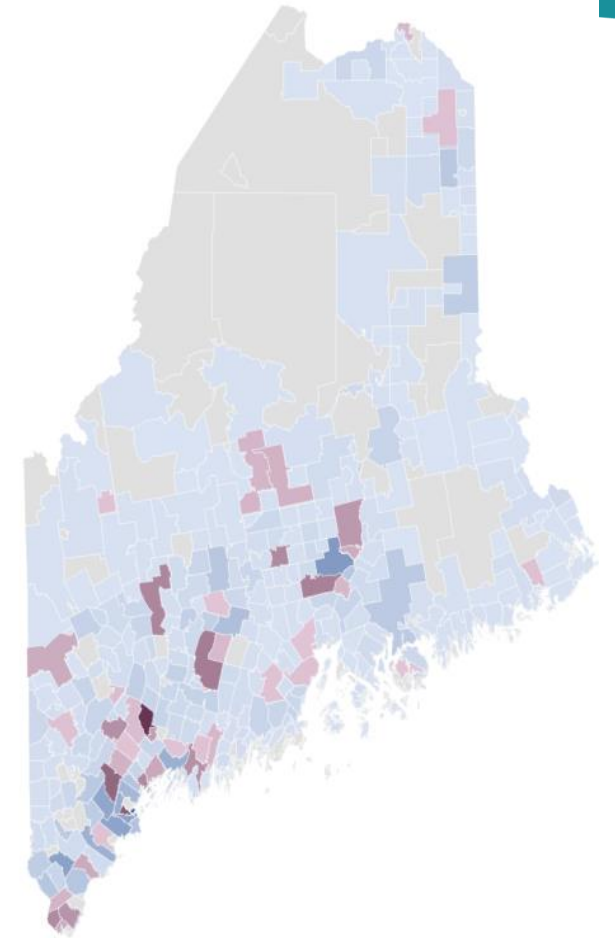


Updated 8.2.21

K-12 Pooled Testing

As of August 6, 2021

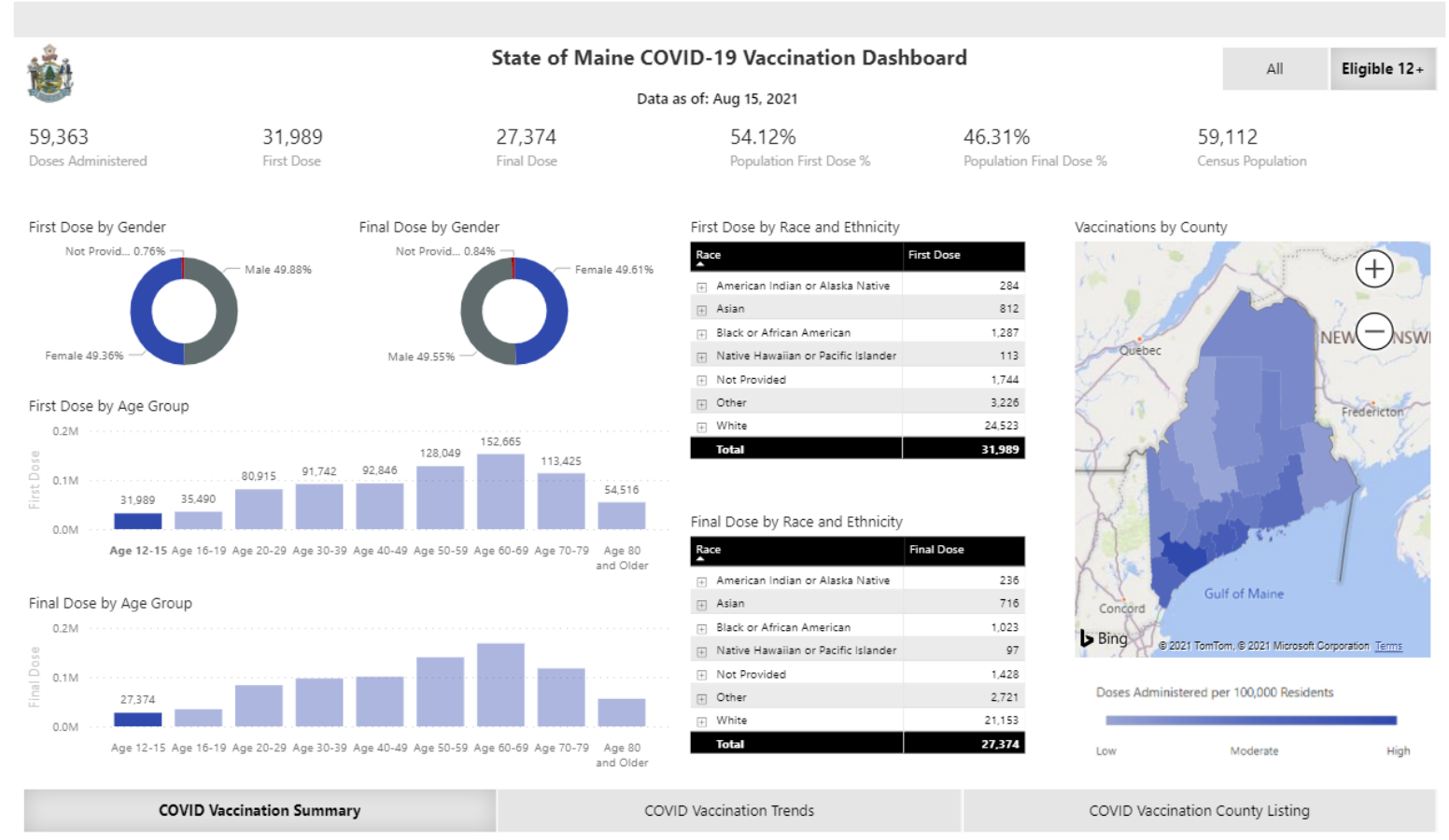
- 249 schools have enrolled, 80 districts
- 198 pools completed – 1 positive
- 16 counties represented by enrollees
- 55,000+ targeted students/staff
- Participation rate of 45% in enrolled schools



Pooled testing enrollments

Youth Covid-19 Vaccination Rates

- Currently, vaccine data is available by age group and county for youth.
- Zip code level data is available for all ages on:
 - [COVID-19 Vaccination Dashboard | Covid-19 \(maine.gov\)](https://maine.gov/covid-19-vaccination-dashboard)



Youth Covid-19 Vaccination Rates

- In August, youth vaccination rates (% and at least one dose) will be available at the School Administrative Unit (SAU) level via a map
- Population estimates for each SAU come from the 2019 5-year American Community Survey ZIP code level population estimates and SAU data
 - Data suppressed if <5 students in this age group in the SAU
 - Youth vaccination rates reported to the Maine CDC through ImmPact

School Staff Vaccination Rates and Reporting

- High vaccination rates help ensure school safety
- Facilitates in-person learning and protects vulnerable students and staff
- DHHS is requiring school staff to report COVID – 19 vaccine rates effective September 1
- Vaccination rates (%) will be publicly posted to guide local decision-making safety policies
- Public reporting will resemble the [Maine Health Care Worker COVID-19 Vaccination Dashboard](#)

Assist Schools/SAUs to Raise

1. Partner with SAUs: SAUs can complete a survey/application with COVID vaccination plans for 2021-2022. They can request help connecting to a vaccine provider through this link: [2021-22 School COVID Vaccine Clinic Survey and Application](#)
2. Share community/family resources for vaccination: [COVID-19 Vaccine Information & Resources](#)
3. Participate in community forums with schools, local medical and public health experts
4. Learn about additional resources about hosting a vaccination clinic in the [School Location Vaccine Clinic \(SLVC\) Toolkit](#)

Routine Childhood Vaccines- Law Goes into Effect September 1, 2021

- Rulemaking still in process for LD 798/CH 154 on Childhood Immunizations. Routine technical rule changes are proposed to amend Immunization Requirements for School Children 10-144 CMR ch. 261 (a joint rule with the Department of Education, ch. 126)
- Maine Immunization Program sent letter to Providers on Preparing Students for 2021-22 School Year 8_4_21.pdf with focus on required school vaccines
- DOE also sent letter to schools to distribute to families about the law

Maine DOE School Public Health Response Team

Purpose:

The School Public Health Response Team will be the point of contact that SAUs and APS can reach out to for the most current answers related to Covid-19, pooled testing and school located vaccine clinics (SLVC).

Staff:

- Coordinator- Nancy Dube, RN
- Three Public Health Specialists – Each will cover 3 Superintendent Regions
- Nine Public Health Liaisons- Each will cover one of the 9 Superintendent Regions

Supporting In-Person Learning in Schools

Multilayered Approach:

- Encourage vaccination of all eligible staff and students and community members
- Recommend masking of all staff and students per CDC guidance
- Recommend testing: weekly pooled testing for all student and staff and rapid antigen testing for symptomatic individuals
- Social distance when possible
- Practice good hand hygiene
- Stay home when sick
- Support schools and families

Now's your time to ask questions. Please use the Q and A option.



Ed Gilkey, MD, MS,
MBA, CPE, Senior
Physician Executive,
Northern Light
Beacon Health



Jim Jarvis, MD, FAAFP,
Senior Physician
Executive , Incident
Command, Northern
Light Health, Director,
Clinical Education,
Northern Light EMMC



Amy Belisle, MD, MBA,
MPH, Chief Pediatrician
and Chief Child Health
Officer, Maine
Department of Health
and Human Services



Elisabeth Marnik, Ph.D,
Assistant Professor College
of Science and Humanities,
Husson University



Angela Fileccia, LCSW,
Director Healthy Life
Resource Program,
Northern Light Acadia

Tools you can use:

<https://northernlighthealth.org/Resources/Safe-Return-to-Business>

KEEPING KIDS SAFE

An evidence-based approach to protecting kids during the school year

The Centers for Disease Control and Prevention and the American Academy of Pediatrics strongly recommend that in order for schools to remain open, which is of critical importance to the education and wellbeing of children and families, certain public health measures must be instituted and adhered to, like universal mask wearing.

Why now?

Delta has changed the game.

- Delta is 200% more transmissible and results in up to 1000x higher viral load compared to previous variants.
- This translates into a R(0) of 6-10. Meaning, on average, one person infects 6-10 people. This is similar to the R(0) for chickenpox and higher than the R(0) for smallpox.
- Vaccinated individuals who become infected can spread the Delta variant to others.

Kids don't have an immunity wall.

Not enough kids are protected for an effective immunity wall.

- For example, only 30% of children have SARS-CoV-2 antibodies in Texas, meaning a majority of kids have yet to be exposed to COVID-19 (Messiah et al., 2021).
- Many children haven't had the opportunity to be protected by the COVID-19 vaccine.
 - Only 12+ are eligible
 - Not enough eligible adolescents are vaccinated.
 - Only 39% of 16-17 year-olds and 27% of 12-15 year-olds are fully vaccinated in the United States (AAP, July 28, 2021)

We can do it safely during a pandemic.

Study after study shows the effectiveness of a layered approach in K-12 schools.

- In Missouri, schools that implemented masks, physical distancing, and increased ventilation had much lower transmission than in the community (Dawson et al., 2021)
- In Utah, despite high community incidence and an inability to space students' classroom seats 26 ft apart, high student mask use resulted in low transmission and no school-related outbreaks in 20 Salt Lake County elementary schools (Hershow et al., 2021)
- In rural Wisconsin, masking requirements and student cohorting within schools allowed transmission risk to remain low (Falk et al., 2021)
- A study in Florida found a layered approach is especially needed when community spread is high (Doyle et al., 2021)

We need to do it for our kids' health.

COVID-19 in kids can range from mild to severe illness.

- As of July 22, 2021, over 4.1 million COVID-19 pediatric cases have been reported. The CDC estimates that the "true" burden is 26,838,244 pediatric cases in the U.S.
- In 23 states, 16,878 pediatric hospitalizations have been reported. The CDC estimates 209,264 cumulative pediatric hospitalizations in the U.S. as a whole.
 - Hospitalization rates for COVID-19 are higher than for the 2009-10 H1N1 pandemic.
- As of May 2021, 3,742 MIS-C cases have been linked to COVID-19.
- Over 400 pediatric deaths have been reported since the beginning of the pandemic. Although this seems low compared to adults, COVID-19 is now a top 10 cause of death for adolescents in the United States.
- Mortality is not the only negative outcome. Long COVID-19 (or Post-acute Sequelae of COVID-19 (PASC)) has been reported among kids.
- The British National Health Service is reporting that 7-8% of kids experience long COVID-19 and is opening new pediatric clinics for long COVID-19 around the country.

We need to do it for our community.

We need to stop transmission among kids to stop spread in the community.

- Kids spread SARS-CoV-2 as efficiently as adults. Several outbreak investigations have demonstrated transmission among children, adolescents, and young adults, including transmission to older household members.
- Living with a child engaged with in-person school without public health mitigation measures increases the odds of COVID-19 for the household (Lessler et al., 2021)
- Children who got COVID-19 at two Utah daycares spread it to household members (Schwartz et al., 2020)

A collective approach is far more effective.

A collective approach is far more effective than an individualistic approach.

- While masks provide protection to the wearer, they primarily serve as source control and the greatest benefits occur if everyone wears them.
- Kids are highly influenced by peers and teachers. If all peers are required to wear masks, social desirability will play a factor into compliance.
- Using vaccination status to determine who should wear a mask in schools will be a huge burden on teachers and staff and nearly impossible to enforce.

This guide was created by Dr. Katelyn Jettolina, MPH PhD--epidemiologist, mom, and founder of Your Local Epidemiologist. With the assistance of Dr. Allison Bernstein, PhD (neuroscientist, mom) and Dr. Christine Propper, MD TRAP (pediatrician, mom).

Due to Regional COVID-19 Rates



Masking is Required Inside
Regardless of Vaccination Status
Thank You!


Northern Light Health.

SAVE THE DATE: Thursday, September 16: Mental Health and living with continued COVID

Topics:

- Latest on COVID-19
- Supporting good mental health and increasing awareness

**Northern Light Health.**

One-hour Zoom conferences
Twice a month on Thursdays at 11 am
Moderated forums with Q&A
presented by Northern Light Health

zoom Business to Business Conference Series

GOOD HEALTH IS GOOD BUSINESS

SAVE THIS DATE! Thursday, September 16 at 11 AM



Mental health and living with continued COVID

Topics will include:

- Latest on COVID-19
- Supporting good mental health and increasing awareness

Panelists:

Jim Jarvis, MD, FAAFP
Senior Physician Executive,
Incident Command, Northern Light Health
Director, Clinical Education
Northern Light Eastern Maine Medical Center

Clifford Singer, MD
Chief Geriatrics Psychiatry Mood
and Memory Clinic
Northern Light Acadia Hospital

Yemaya St. Clair, LCPC-C
EAP Counselor
Northern Light Work Force

Angela Filecchia, LCSW
Director Healthy Life Resource Program
Northern Light Acadia

Others TBD

Moderated by:

Ed Gilkey, MD, MS, MBA, CPE
Senior Physician Executive
Northern Light Beacon Health

YOU MAY REGISTER EARLY
BY CLICKING HERE

Please contact Lanie Abbott
for more information lwabbott@northernlight.org

Legal Disclosure:

The Coronavirus pandemic is an ongoing, continuously evolving situation.

Northern Light Health (NLH) encourages everyone to follow federal and state governmental guidance and mandates.

NLH does not know the particulars of your situation, so the information presented today is general in nature and is based upon NLH's own experience, which may or may not apply in your specific situation, and which may be revised as we learn more about the Coronavirus.

Accordingly, following any guidance NLH presents today in no way guarantees that you, your employees and/or your customers and clients will not contract or spread the Coronavirus.